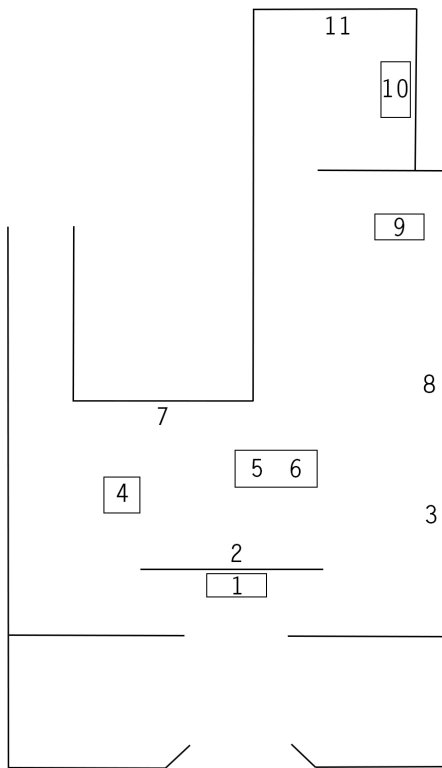


Louise Bonnet and Elizabeth King
De Anima
May 7 – September 7, 2025

1ST FLOOR



1. Elizabeth King
Bartlett's Left Hand, 2017
Carved and turned English boxwood
Courtesy of the artist

2. Elizabeth King
Bartlett's Hand, 2005
Silent stop-frame animation, 5 min
Courtesy of the artist

3. Louise Bonnet
Bra 2, 2025
Oil on linen
Courtesy of the artist and Gagosian

4. Elizabeth King
Untitled Articulated Figure, 1974-78
Porcelain, copper-plated steel, bronze,
glass eyes, hair, Alaskan cedar frame
Courtesy of the artist

5. Elizabeth King
Idea for a Mechanical Eye, 1988-90 Cast
acrylic, carved wood, brass, springs.
Eyeball made in collaboration with
ocularist Earle C. Schreiber. Courtesy
of the artist

6. Elizabeth King
Articulated Torso, 1984-86
Bronze
Courtesy of the artist

7. Louise Bonnet
Pants, 2025
Oil on linen
Courtesy of the artist and Gagosian

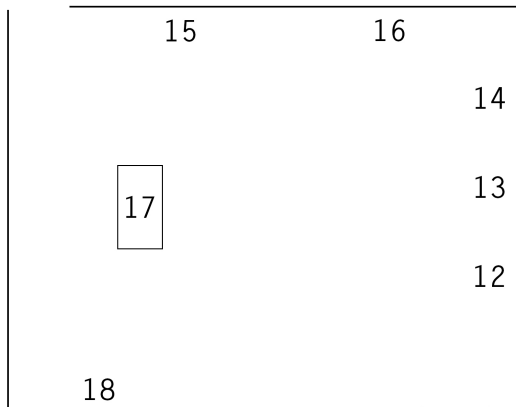
8. Louise Bonnet
Zipper, 2025
Oil on linen
Courtesy of the artist and Gagosian

9. Elizabeth King
Untitled, 1993
Porcelain, glass eyes, fiber optics,
black basalt plinth
Courtesy of the artist

10. Elizabeth King
Untitled, 1986
Carved wood (holly)
Courtesy of the artist and Barry Art
Museum

11. Elizabeth King
What Happened, 1991/2008
Silent stop-frame animation, 2 min
Courtesy of the artist

2ND FLOOR



12. Elizabeth King
How to make a thumb, 2008
Carved and turned English boxwood, brass
Courtesy of the artist

13. Louise Bonnet
Shoelace, 2025
Oil on linen
Courtesy of the artist and Gagosian

14. Elizabeth King
A Pocket Anatomy, 2001
Porcelain, ebony, brass, human hair,
silk, glass
Courtesy of the artist

15. Louise Bonnet
Bra I, 2025
Oil on linen
Courtesy of the artist and Gagosian

16. Louise Bonnet
Shoe, 2025
Oil on linen
Courtesy of the artist and Gagosian

17. Elizabeth King
Studio Objects and Glass Eyes
Courtesy of the artist

18. Elizabeth King
Quizzing Glass, 2005
Silent stop-frame animation, 2 min
Courtesy of the artist